



EMC® NetWorker®

Licensing Process Guide

**FIRST EDITION
P/N 300-007-566
REV A01**

EMC Corporation
Corporate Headquarters:
Hopkinton, MA 01748-9103
1-508-435-1000
www.EMC.com

Copyright © 2008 EMC Corporation. All rights reserved.

Published July 2008

EMC believes the information in this publication is accurate as of its publication date. The information is subject to change without notice.

THE INFORMATION IN THIS PUBLICATION IS PROVIDED "AS IS." EMC CORPORATION MAKES NO REPRESENTATIONS OR WARRANTIES OF ANY KIND WITH RESPECT TO THE INFORMATION IN THIS PUBLICATION, AND SPECIFICALLY DISCLAIMS IMPLIED WARRANTIES OF MERCHANTABILITY OR FITNESS FOR A PARTICULAR PURPOSE.

Use, copying, and distribution of any EMC software described in this publication requires an applicable software license.

For the most up-to-date regulatory document for your product line, go to the Technical Documentation and Advisories section on EMC Powerlink.

For the most up-to-date listing of EMC product names, see EMC Corporation Trademarks on EMC.com.

All other trademarks used herein are the property of their respective owners.

Preface**Chapter 1 How NetWorker Licensing Works**

NetWorker software internal licensing	10
Evaluating the software	10
Updating licenses	11
NetWorker License Manager	11

Chapter 2 The Licensing Process

Licensing stages	14
The licensing process.....	16
Downloading and installing the NetWorker software	16
The purchase order.....	17
The LAC letter.....	17
The software license certificate.....	18
The product license activation letter.....	20
Applying license keys in NetWorker	21

Chapter 3 Other Topics and Questions

Tips and best practices	26
Questions	27

Glossary

As part of an effort to improve and enhance the performance and capabilities of its product lines, EMC periodically releases revisions of its hardware and software. Therefore, some functions described in this document may not be supported by all versions of the software or hardware currently in use. For the most up-to-date information on product features, refer to your product release notes.

If a product does not function properly or does not function as described in this document, please contact your EMC representative.

Audience

This guide is related to, but not part of, the EMC NetWorker documentation set. It is intended for use by system administrators who are responsible for installing and licensing NetWorker software.

Readers of this document are expected to be familiar with the following topics:

- ◆ Installing NetWorker software
- ◆ NetWorker software requirements and configuration

Related documentation

Related documents and tools include:

- ◆ *EMC NetWorker Release Notes* for your current release
- ◆ *EMC NetWorker Installation Guide* for your current release
- ◆ *EMC NetWorker Administration Guide* for your current release, for information about using NetWorker Management Console (Console)
- ◆ EMC Powerlink online user documentation, such as:
 - Under Help, in the Powerlink License Management page
 - Under Help, in the Powerlink Licensing portal:
 - Powerlink Frequently Asked Questions
 - Under **Home > Resources > Tools > Powerlink User Tools > Powerlink Customer Workshops**:
 - Using Powerlink: Overview Presentation
 - Using Powerlink: Knowledgebase Search

Conventions used in this document

EMC uses the following conventions for special notices.

Note: A note presents information that is important, but not hazard-related.

**CAUTION**

A caution contains information essential to avoid data loss or damage to the system or equipment.

**IMPORTANT**

An important notice contains information essential to operation of the software.

Typographical conventions

EMC uses the following type style conventions:

Normal	Used in running (nonprocedural) text for: <ul style="list-style-type: none"> Names of interface elements (such as names of windows, dialog boxes, buttons, fields, and menus) Names of resources, attributes, pools, Boolean expressions, buttons, DQL statements, keywords, clauses, environment variables, functions, utilities URLs, pathnames, filenames, directory names, computer names, filenames, links, groups, service keys, file systems, notifications
Bold	Used in running (nonprocedural) text for: <ul style="list-style-type: none"> Names of commands, daemons, options, programs, processes, services, applications, utilities, kernels, notifications, system calls, man pages Used in procedures for: <ul style="list-style-type: none"> Names of interface elements (such as names of windows, dialog boxes, buttons, fields, and menus) What user specifically selects, clicks, presses, or types
<i>Italic</i>	Used in all text (including procedures) for: <ul style="list-style-type: none"> Full titles of publications referenced in text Emphasis (for example a new term) Variables
Courier	Used for: <ul style="list-style-type: none"> System output, such as an error message or script URLs, complete paths, filenames, prompts, and syntax when shown outside of running text
Courier bold	Used for: <ul style="list-style-type: none"> Specific user input (such as commands)
<i>Courier italic</i>	Used in procedures for: <ul style="list-style-type: none"> Variables on command line User input variables
< >	Angle brackets enclose parameter or variable values supplied by the user
[]	Square brackets enclose optional values
	Vertical bar indicates alternate selections - the bar means "or"
{ }	Braces indicate content that you must specify (that is, x or y or z)
...	Ellipses indicate nonessential information omitted from the example

- Where to get help** EMC support, product, and licensing information can be obtained as follows.
- Product information** — For documentation, release notes, software updates, or for information about EMC products, licensing, and service, go to the EMC Powerlink website (registration required) at:
- <http://Powerlink.EMC.com>
- Technical support** — For technical support, go to EMC Customer Service on Powerlink. To open a service request through Powerlink, you must have a valid support agreement. Please contact your EMC sales representative for details about obtaining a valid support agreement or to answer any questions about your account.
- Your comments** Comments and suggestions about our product documentation are always welcome. To provide feedback:
1. Go to:
<http://Powerlink.EMC.com>
 2. Click the **Feedback** link.

This chapter is an overview of licensing within EMC NetWorker software:

- ◆ [NetWorker software internal licensing](#) 10

“[The Licensing Process](#)” on [page 13](#) contains information about the procedures involved in licensing NetWorker software.

NetWorker software internal licensing

EMC® NetWorker® software and added features, such as modules, are installed in evaluation mode with all of the features enabled. The licensing of NetWorker software includes entering enabler and authorization (auth) codes on the server for the NetWorker environment. Without these codes, the software or added features will *not* run beyond the evaluation period.

Each installation of NetWorker server software must be licensed with a base enabler. Only the server's enabler is called a *base* enabler. This enabler "turns on" the software and allows the use of a particular bundle of features, such as a specified number of clients and devices. All license keys are entered and stored on the NetWorker server, which enforces the licensing.

Note: Although license keys are applied, stored, and enforced on the server, the purely administrative side of licensing (such as the authorization of a license to a customer site and the issuing and activation of license certificates) is handled through the Licensing portal of Powerlink®.

Base enablers come in different editions that enable varying degrees of function. Add-on enablers allow a broader scope of features.

The information in this guide generally assumes that the NetWorker software is installed and that all of the software and hardware requirements have been met on the computer that accesses the NetWorker Management Console interface (known as Console). These requirements are described in the *EMC NetWorker Installation Guide*.

Evaluating the software

NetWorker software can be evaluated in either of two ways:

- ◆ As a new installation on a NetWorker server
- ◆ As individual NetWorker features on an existing installation

Evaluating a new installation

When NetWorker software is first installed, it can be evaluated with all of its modules and features for 30 days, free, without the need to enter any codes.

By the end of the evaluation period, the appropriate permanent enablers, including a base enabler, must be purchased, entered, and authorized in order to use the software permanently to back up data. A temporary enabler cannot be permanently authorized.

Note: Once a given enabler expires, it can no longer be used to back up data, although data can still be retrieved.

To continue to use some of the modules and features that were available with the evaluation software, certain add-on enablers might be required, depending on the edition of the base enabler.

Evaluating features on an existing installation

To evaluate one or more NetWorker Modules or features on an edition of NetWorker software that has already been installed and enabled, enter a temporary enabler for each additional module or feature. Each temporary enabler is valid for 45 days.

Obtain a temporary enabler code in either of the following ways:

- ◆ Go to the website <http://Powerlink.EMC.com>, select **Support > Product Registration and License Keys**, and then follow the instructions for the product selected.
- ◆ Refer to the EMC Information Protection Media Kit.

By the end of the evaluation period, a permanent enabler must be purchased, entered, and authorized to continue to use the modules or features under evaluation.

Note: “[Related documentation](#)” on page 5 contains pointers to helpful, related information regarding Powerlink.

Updating licenses

An update license is necessary to move from an existing major NetWorker release to a newer major NetWorker release (for example, from release 7.2 to 7.3). Update licenses are not required for maintenance releases. Update licenses are free for customers with NetWorker software support contracts.

Always refer to the Release Notes for a given NetWorker release to determine whether an update license is required.

Note: If a required update license is not applied, the NetWorker software will not function at the new release level. Required update licenses must be applied *before* the NetWorker server is upgraded, or the server will be disabled.

NetWorker License Manager

Enterprises that include multiple NetWorker servers could benefit from installing the EMC NetWorker License Manager, which provides a central server location to manage all EMC product licenses. Once the License Manager is installed and functional, it is no longer necessary to go to each NetWorker server to perform license upgrades and authorizations. The License Manager is an installation option with NetWorker releases and is required for certain advanced reporting features.

The License Manager adds flexibility to NetWorker server setups by allowing an administrator to move servers within a domain and to decommission and recommission a server with minimal disruption to the licensing process.

A License Manager server can use Console to set up NetWorker servers to contact the License Manager server for their licenses.

For more information, refer to the EMC NetWorker License Manager documentation.

This chapter describes how to license and enable NetWorker software. Topics include:

- ◆ Licensing stages..... 14
- ◆ The licensing process 16

Licensing stages

NetWorker licensing generally involves four stages:

1. Download and install the software for evaluation.
2. Send a purchase order for the software to EMC. Receive a License Authorization Code (LAC) letter in return.
3. Activate the licenses for the purchased software through Powerlink Licensing.
4. Apply the resulting license keys in NetWorker in order to license the software permanently.

If no evaluation period is required, the first and second stages can be done together.

Stages 1 and 4 must be done on the user's NetWorker server. The licensing through Powerlink can be done from any customer system that has Internet access, by any customer with a Powerlink user account.



IMPORTANT

The key to understanding NetWorker software licensing is to realize that certain steps are performed in Powerlink and others in the NetWorker software, itself. The software is not permanently licensed until all of the steps on both platforms have been completed. [Figure 1 on page 15](#) provides more information.

Note: Become familiar with the terms in the "[Glossary](#)" beforehand to save time and help eliminate confusion. The documents and tools mentioned in "[Related documentation](#)" on [page 5](#) can also facilitate the licensing process.

NetWorker software can be downloaded and evaluated for free from Powerlink or from the EMC website. The software may then be evaluated for 30 days without the need to obtain any type of license. After that, it is possible, through Powerlink Licensing, to obtain temporary enablers that extend the software for an additional 45 days. These temporary enablers are also free of charge, and must be applied on the NetWorker system. Each NetWorker product being evaluated requires a separate enabler; the enabler for the NetWorker server is also known as the base enabler.

Each 45-day temporary enabler may be extended once, for an additional 45 days.

To keep and continue running NetWorker software permanently after either the evaluation or temporary enabler period has ended requires a purchase order to obtain permanent enablers and authorization codes. Permanent enablers, combined with their respective authorization codes, provide permanent licenses for specific NetWorker releases (and associated maintenance releases) to a specific customer.

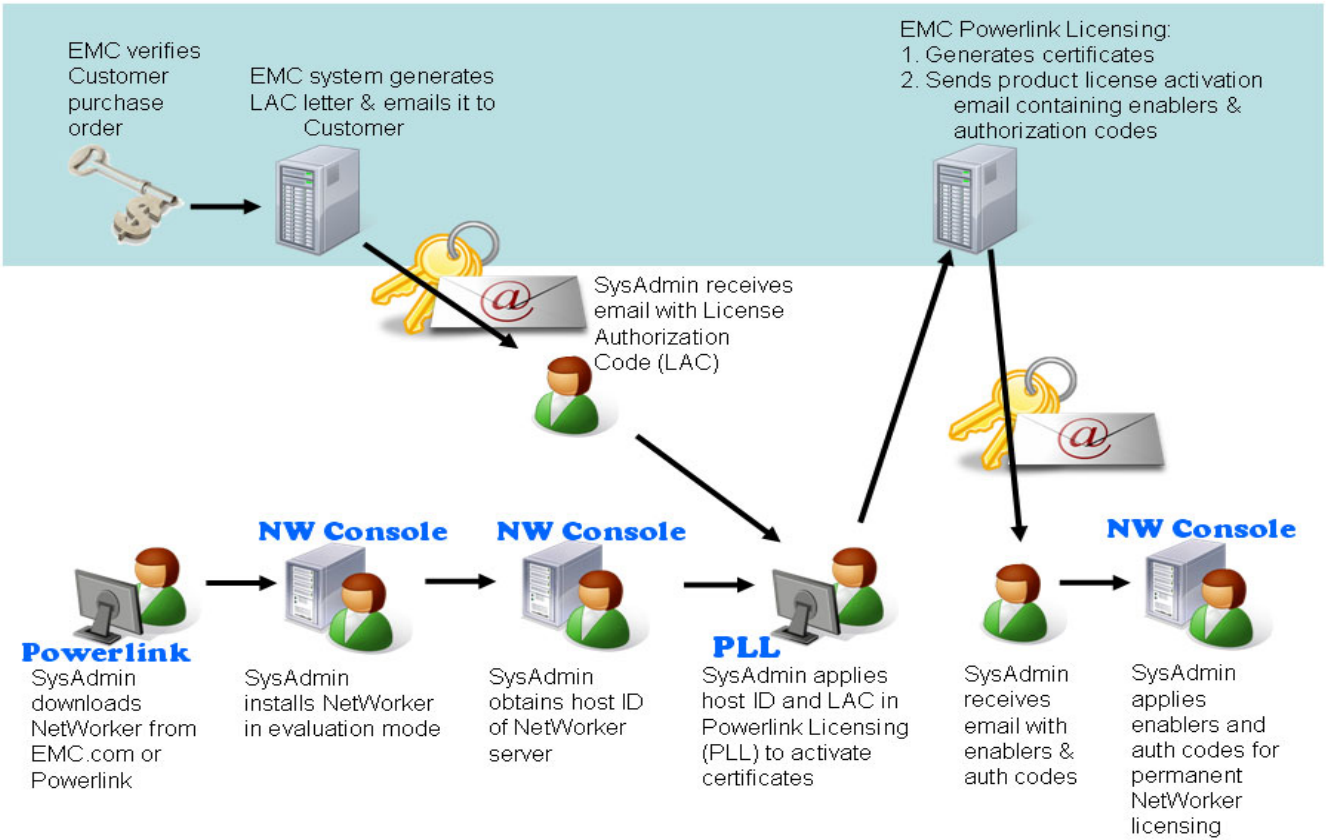


Figure 1 NetWorker license process flow

The licensing process

In general, the NetWorker licensing process consists of the following steps:

1. A customer downloads, installs, and evaluates the software.
2. The customer decides to purchase the software and sends EMC a valid purchase order that lists the requested NetWorker product, options, and modules.
3. EMC produces a LAC letter in response to the valid purchase order and sends it to the customer by email.
4. At the customer's site, the NetWorker system administrator goes into Powerlink Licensing and enters the LAC and the host ID of the NetWorker server to activate the software license certificate.
5. Powerlink Licensing confirms the license activation by email by sending a product license activation letter to the customer contact that contains enablers and authorization codes.
6. The system administrator applies the license keys (permanent enabler codes and auth codes) on the NetWorker server.

Figure 1 on page 15 illustrates the process flow.

The licensing process is the same for all editions of NetWorker software as well as for individual modules and features.

The following sections describe the process in more detail.

Downloading and installing the NetWorker software

To download the NetWorker software, follow these steps (similar instructions also appear in the LAC letter):

1. Go to EMC Powerlink. (The current URL is included in the LAC letter.) Once there, if you do not have an account, follow the New Member Registration steps.
2. Log in with user name and password.
3. Navigate to **Support > Software Downloads and Licensing**.

Figure 2 on page 17 shows the Powerlink path to download NetWorker software.

4. Locate and click **NetWorker**, then download the appropriate software packages.

The *EMC NetWorker Installation Guide* that is part of the software download contains installation instructions.

The evaluation period can be extended by obtaining entitlement extensions and applying the resulting temporary enablers.

The next step is to send a purchase order for the NetWorker software.

Figure 2 Powerlink home page showing the path to download NetWorker software

The purchase order

A customer's purchase order lists the NetWorker product models to be purchased. This could include a variety of products, such as a NetWorker server, client packages, storage node packages, database modules, de-duplication, and many other product models or features.

Upon receipt of a valid purchase order, EMC sends a LAC letter by email to the customer contact specified in the purchase order.

The LAC letter

A LAC letter is sent by EMC to a customer after a valid purchase order for NetWorker software has been received.

The LAC letter includes the following:

- ◆ A LAC to be used to activate the license keys for the products. License keys consist of enabler codes and authorization (auth) codes.
- ◆ Instructions for activating the software and obtaining the license keys.
- ◆ Software download instructions, in case the NetWorker software has not yet been downloaded in evaluation mode.
- ◆ A list of the NetWorker products ordered, along with their SKU numbers.
- ◆ Contacts for licensing and support information.



IMPORTANT

Do not confuse a LAC with an auth code. LACs are used in Powerlink Licensing to obtain and activate the license keys that contain both enabler and auth codes. A LAC allows you to obtain an auth code, but it is the *combined* application of enabler and auth codes in NetWorker that permanently licenses your software.

Use the information in the LAC letter to activate the software license certificate. The NetWorker server's host ID is required for the activation.

The software license certificate

These steps are performed by the customer, possibly by a NetWorker system administrator.

To create and activate the software license certificate, follow these steps (similar instructions also appear in the LAC letter):

1. Obtain the host ID of the NetWorker server. [“Obtaining the host ID of the NetWorker server” on page 19](#) contains instructions for this.
2. Go to Powerlink. (The current URL is included in the LAC letter.) Once there, if you do not have an account, follow the New Member Registration steps.
3. Log in with user name and password.
4. Navigate to **Support > Software Downloads and Licensing > License Management**.
5. Locate and click **NetWorker**.
6. Enter the LAC from the LAC letter.
7. Click **Activate**.

[Figure 3 on page 19](#) shows the LAC entry field and the activation button.

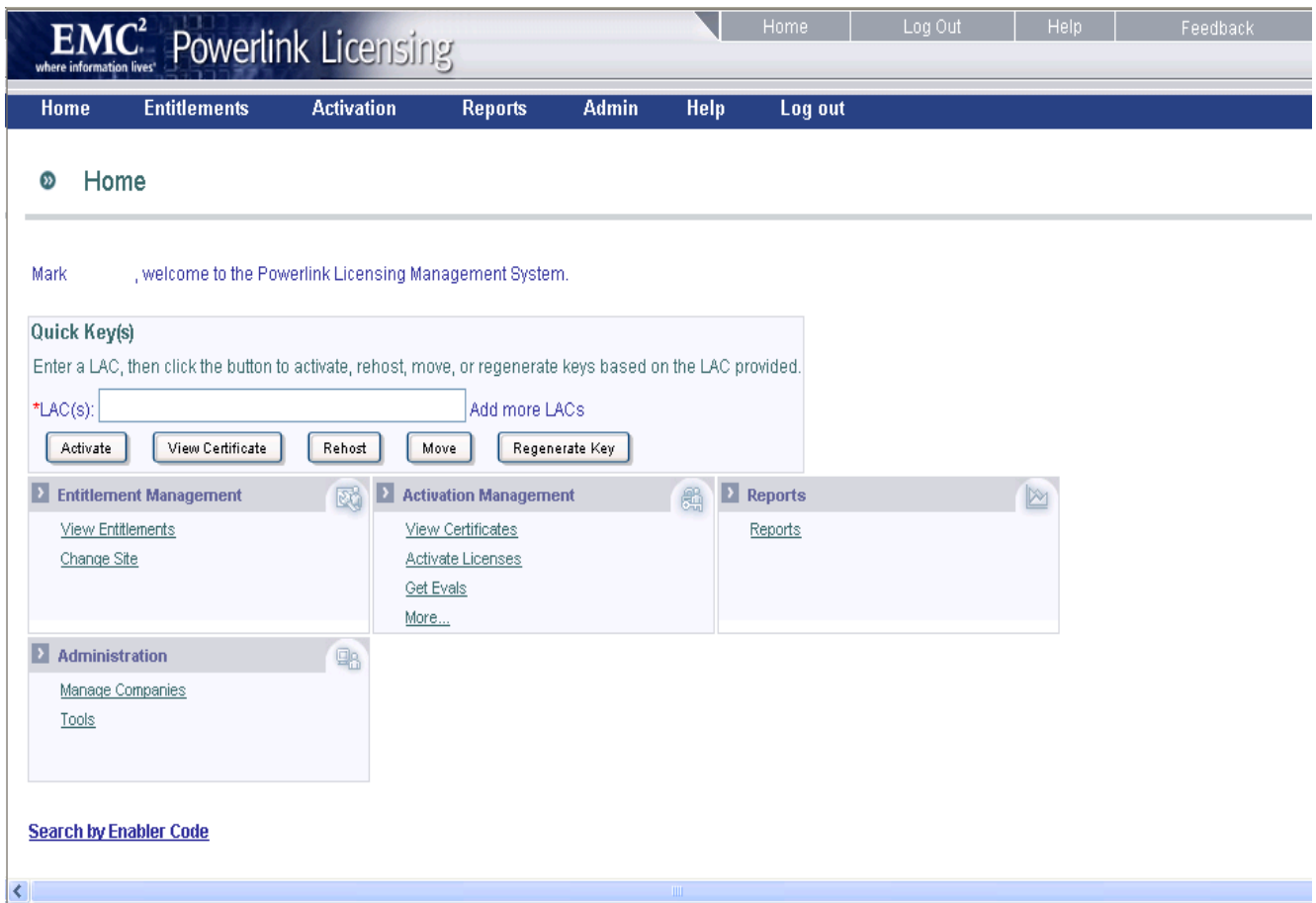


Figure 3 Powerlink Licensing page showing the LAC entry field and the button used to activate license certificates

8. Follow the remaining steps to obtain the license keys.

This includes entering the host ID of the system that is the NetWorker server. [“Obtaining the host ID of the NetWorker server” on page 19](#) describes how to locate the host ID.

Obtaining the host ID of the NetWorker server

To find the host ID of the NetWorker server, follow these steps:

1. Open the NetWorker server’s NetWorker Management Console (Console) interface.
2. Select **NetWorker Administration**.
3. In the **Administration interface**, click the **Configuration** button.
4. Right-click **Registrations** in the navigation tree, then right-click the NetWorker evaluation license (or any NetWorker license) in the **Registrations** area of the screen.

The **Properties** window appears. [Figure 4 on page 20](#) shows the **Properties** window and its fields.

5. In the **Configuration** area of the **Properties** window, the Host ID is the last of the parameters displayed.
6. Click **OK** or **Cancel** to leave the **Properties** window.

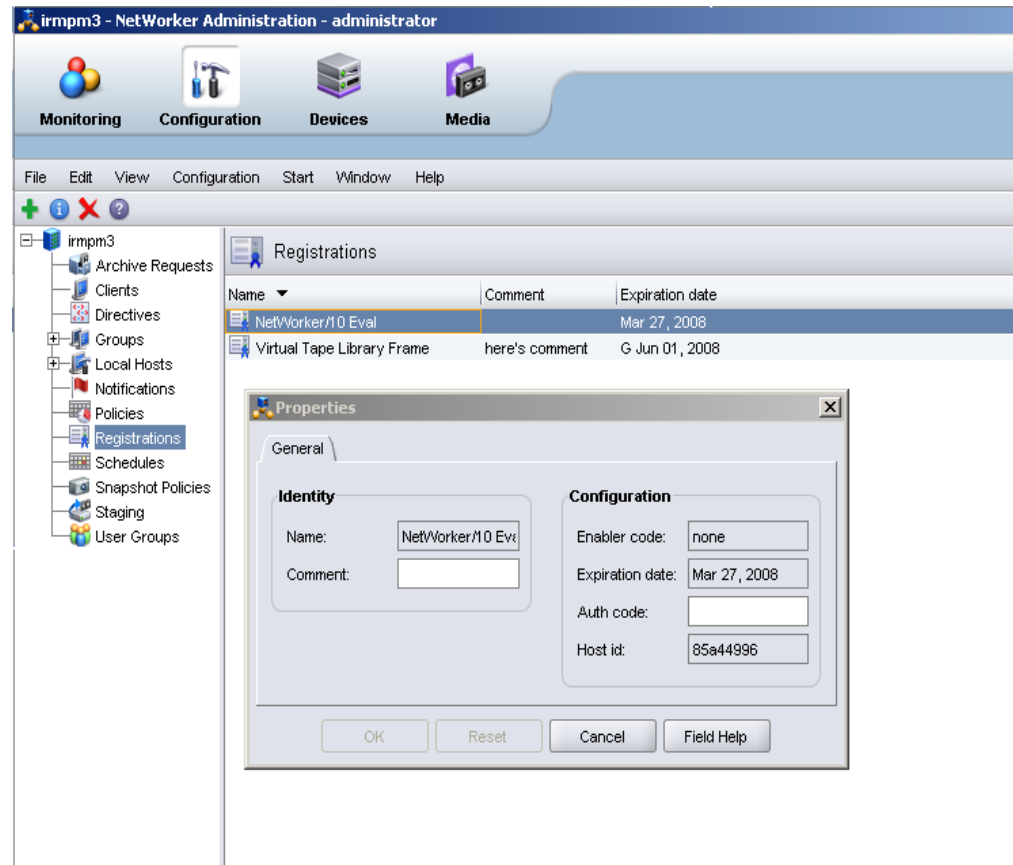


Figure 4 Location of the NetWorker host ID in the NetWorker evaluation license's Properties window

After the software license steps have been completed, EMC sends the product license activation letter by email to the customer contact who activated the license.

The product license activation letter

EMC emails the product license activation letter after the software license certificate has been activated in Powerlink licensing. The letter contains the following:

- ◆ A list of the purchased products, their part numbers, quantities, and version levels
- ◆ The certificate ID number
- ◆ The LAC
- ◆ The NetWorker host ID

- ◆ The license (activation) keys, consisting of permanent enablers and authorization codes (Once applied jointly in NetWorker's Console interface, these codes permanently license the NetWorker software.)
- ◆ Contacts for licensing and support information

Next, apply both the permanent enablers and auth codes on the NetWorker server.

Applying license keys in NetWorker

The final step in the licensing process is to apply the license keys in the NetWorker software. The license keys consist of enablers and auth codes.



IMPORTANT

Even if you have installed temporary enablers that have not yet expired, in order to license the NetWorker software permanently you must apply both the permanent enablers *and* the auth codes provided in the product license activation letter.



IMPORTANT

Apply the permanent *base* enabler (for the NetWorker server) and its auth code last, after having applied all other permanent enablers. Once a base enabler is applied, any device that does not yet have its auth code applied might be disabled, and would have to be re-enabled manually.

To apply enablers and auth codes, follow these steps:

1. In the NetWorker server's NetWorker Management Console (Console) interface, select **NetWorker Administration**.
2. Click the **Configuration** button.
3. Right-click **Registrations** in the navigation tree, and select **New**.

The **Create Registration** window appears.

4. Leave the **Identity** area blank. The name of the product to be licensed will be extracted from the enabler and displayed in the **Registrations** area.
5. In the **Configuration** area of the **Create Registration** window, enter the enabler code for the product to be licensed.

Get the enabler code from the product license activation letter. It is an 18- or 24-character alphanumeric code. (A 24-character enabler signifies a bulk enabler intended for installation only on a NetWorker License Manager server.)

The name of the product appears in the **Name** field.

6. Click **OK** to apply the enabler and leave the **Create Registration** window.

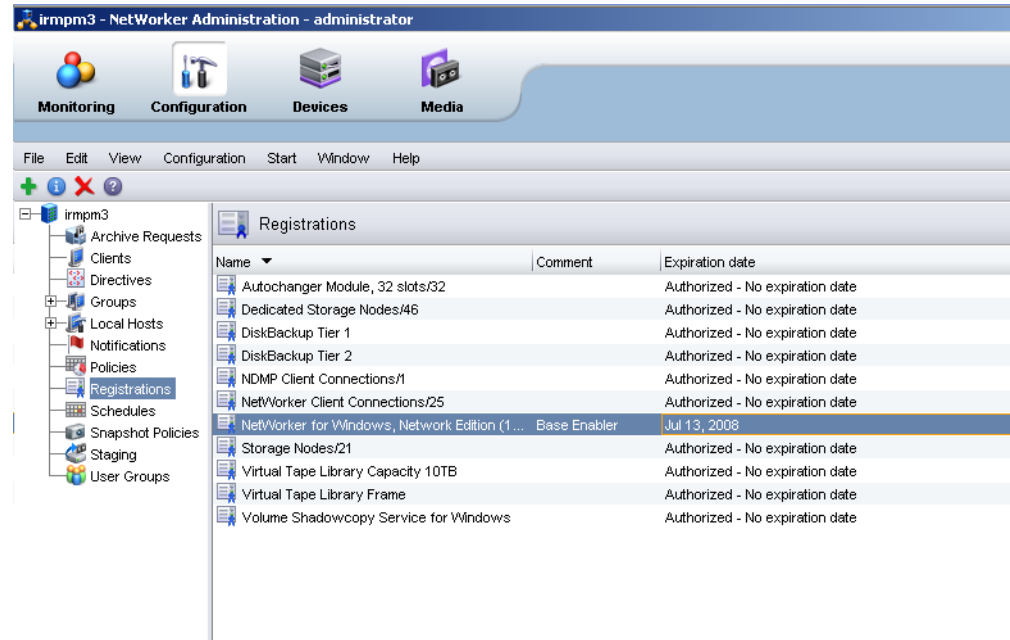


Figure 5 Registrations area showing all NetWorker products for a given certificate enabled and authorized except the base enabler, which is enabled, but not yet authorized

The product is now listed in the **Registrations** area. Note that the enabler expiration date appears in the **Expiration date** column. This date is 45 days after the date on which the enabler was entered. [Figure 5 on page 22](#) illustrates this.

7. Select and right-click the product in the **Registrations** area.

The **Properties** window appears. Note that the **Configuration** area of the window now displays the enabler code and its expiration date.

8. Enter the corresponding 8-character auth code for the enabler code in the **Auth code** field.

[Figure 6 on page 23](#) shows the **Properties** window of the NetWorker server with the base enabler code already entered (indicated by the grayed-out **Enabler code** field and the fact that a date is shown in the **Expiration date** field). The auth code that authorizes the base enabler has just been typed into the **Auth code** field.

Get the auth code from the product license activation letter. It is an 8-character alphanumeric code.

9. Click **OK** to apply the auth code and leave the **Properties** window.

Note that in the **Registrations** area of the screen, the **Expiration date** column entry for the product has changed and now says “Authorized - No expiration date”. [Figure 7 on page 23](#) shows this.

Note: When entering the enabler for the NetWorker server, consider entering “Base Enabler” in the **Comment** field of either the **Create Registration** or **Properties** window.

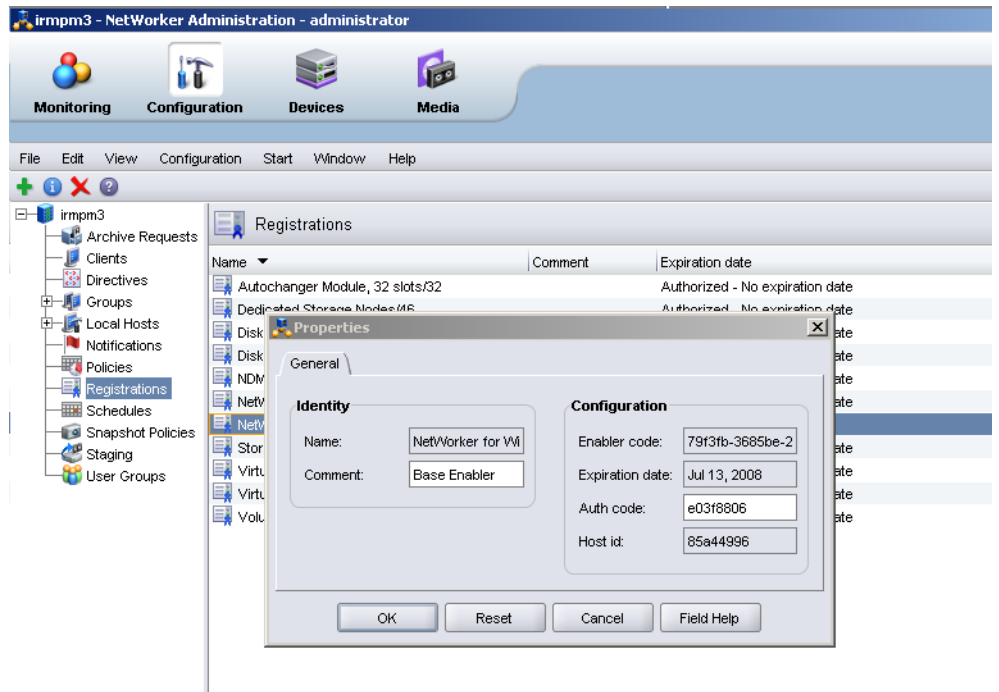


Figure 6 The Properties window of the NetWorker server license with the permanent enabler already installed and the auth code about to be entered

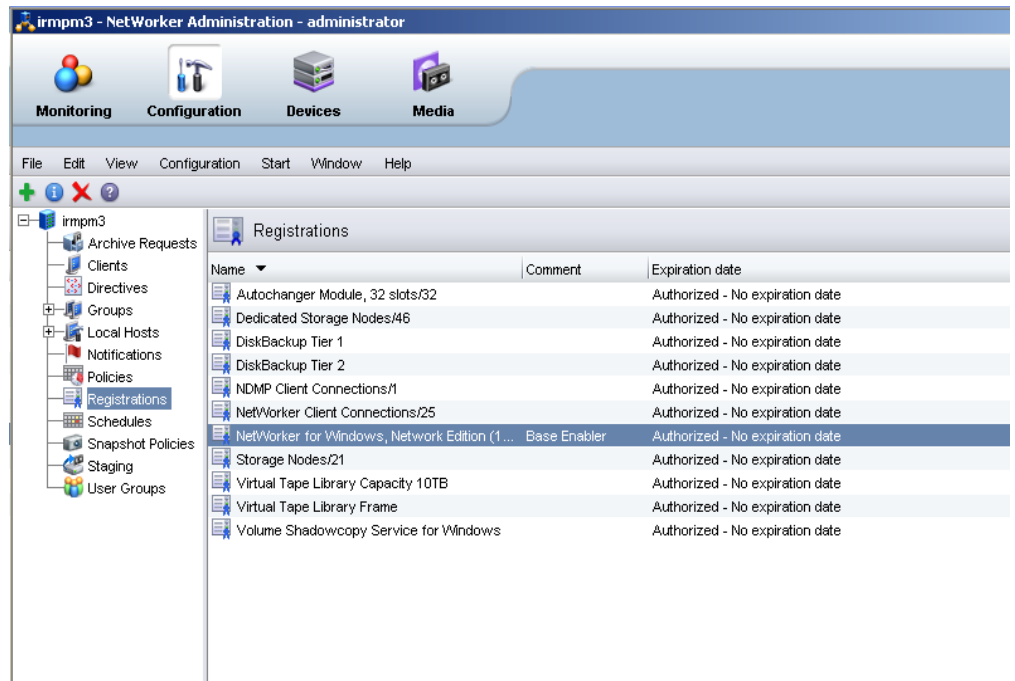


Figure 7 Registrations area showing the license from Figure 6 on page 23, now authorized

This chapter provides some best practices and some questions related to the licensing and enabling process. Topics include:

- ◆ [Tips and best practices.....](#) 26
- ◆ [Questions.....](#) 27

Tips and best practices

This section contains miscellaneous tips that can be useful in dealing with NetWorker licensing:

- ◆ When determining which licenses are required, try using a template, which can prevent “forgotten” licenses. For example:
 - Start with the NetWorker server (the base license).
 - Determine the desired NetWorker Server Edition.
 - Calculate the client licenses.
 - Calculate the dedicated storage node licenses.
 - Calculate the autochanger or silo licenses.
 - Calculate the Virtual Tape Library (VTL) licenses.
 - Calculate the Disk Backup Option (DBO) licenses.
 - Calculate any additional licenses, such as database module licenses.

A template can also help determine the *necessary* licenses for a given configuration, which does not necessarily mean that all of these licenses must be purchased, since certain licenses are included in other licenses. For example, base licenses include a certain number of client licenses.

- ◆ Always check the current version of *EMC NetWorker Release Notes* for your installed release for possible licensing changes.
- ◆ As soon as the base enabler is entered, evaluation mode ends. Function that was available during a 30-day evaluation mode must be specifically enabled with either a temporary or permanent enabler.
- ◆ Always enter the base enabler last.
- ◆ When applying an enabler from a license key (in other words, once the software is paid for and the license certificate has been activated), always apply its corresponding auth code at the same time.
- ◆ Do not use a NetWorker system as a production system unless the auth codes have been applied.
- ◆ If the host ID (NetWorker server) changes, all auth codes become invalid. There is a 15-day period during which a host transfer can be done in Powerlink. During that period, re-register and re-apply the auth codes on the NetWorker server.
- ◆ Calculating NetWorker licenses can sometimes be difficult; for example, recent software changes might not apply yet to the current NetWorker release.
- ◆ Update numbers do not equate to NetWorker release numbers. For example, the update enabler called Update/8 updates to NetWorker release 7.0. The update enabler called Update/9 updates to NetWorker release 7.3.

Questions

This section answers some frequently asked questions about NetWorker licensing:

- ◆ Question: Is an update enabler needed to migrate from older NetWorker releases to release 7.3.x or 7.4? What about from release 7.3.x to 7.4?

Answer: Yes. Upgrading from NetWorker release 7.2.x or earlier versions requires an update enabler when moving to release 7.3.x or later. No update enabler is required to move from NetWorker release 7.3.x to 7.4.

- ◆ Question: Is the purchase of a separate license required to use the encryption feature available in NetWorker software?

Answer: No, use of the encryption solution is available through use of NetWorker directives in an Application-Specific Module (ASM) for encryption.

- ◆ Question: What licensing changes were made in NetWorker release 7.4?

Answer: Improvements to help simplify licensing include the following:

- Silo and Autochanger support were combined into a single set of licenses.
- A true virtual tape library (VTL) license was introduced to enable each VTL-frame in the datazone.
- The NDMP Client Connection license was altered to permit a single license per NAS device, regardless of the number of Data Movers.
- Dedicated storage nodes can back up virtual clients in a cluster.

This glossary contains terms related to NetWorker software licensing.

A

- activation certificate** See “certificate.”
- activation letter** See “product activation letter.”
- activation key** See “key.”
- administrator** The person who installs, licenses, configures, and maintains the NetWorker software. Also called “system administrator”.
- auth code** Short for “authorization code”.
- authorization code** A unique, 8-character alphanumeric code that unlocks the NetWorker software for permanent use. An authorization (or auth) code is node-locked, which means that it can only be applied to a specific host and host ID. It can also be used only with the specific enabler code with which it was associated in the product activation letter. Do not confuse auth code with License Authorization Code (LAC).

B

- base enabler** The enabler associated with the NetWorker server. It is also known as the server license code. The base enabler should be applied and authorized last among the initial group of licenses entered.

C

- certificate** A Powerlink Licensing activation record that includes the license key, host information, and possible other product-specific information for entitlements (evaluation licenses) that have been activated at the same time. Also called an activation certificate. Activation causes a new or updated certificate to be created in Powerlink Licensing. This, in turn, causes a product activation letter to be emailed to the customer.
- certificate ID** The identification number attached to a given certificate.
- Console server** NetWorker servers and clients are managed from NetWorker Management Console. Console also provides reporting and monitoring capabilities for all NetWorker servers and clients.

E

- enabler (or enabler code)** An 18- or 24-character alphanumeric code that allows NetWorker software to run beyond an initial 30-day evaluation period. Enablers are encoded to include licensing parameters such as feature and quantity. A temporary enabler lasts for a limited time. A permanent enabler is supplied with an associated auth code. A temporary enabler is the NetWorker code equivalent of a Powerlink entitlement.
- entitlement** In Powerlink Licensing, the right to use a particular software product in order to evaluate it; an evaluation license. When an entitlement is activated, it triggers the updating of a certificate. An entitlement is the Powerlink administrative equivalent of a NetWorker temporary enabler. An entitlement becomes permanent when its license is activated.
- event** A notification of an application event, such as the impending expiration of a license enabler. This notification contains information that might require user action. It appears in the daemon log of Console.
- expiration date** The date on which any of the following expires: an evaluation copy of NetWorker software, a temporary enabler, or a permanent enabler that was not made permanent by the application of an auth code.

H

- host ID** A serial number that uniquely identifies a computer. For licensing purposes, the computer is the NetWorker server (or, for bulk licenses, the NetWorker License Manager license server).

I

- ID** Identifier; a sequence of bits or characters that identifies a program, device, controller, or system.

K

- key** The combination of an enabler code and an auth code for a specific product. Also called a license key or activation key.

L

- LAC** License Authorization Code. This unique, 20-character alphanumeric code is issued for a customer to use in Powerlink Licensing to obtain license keys electronically. License keys activate the entitlements (the right to use specific products) in a given purchase order. Only LACs that have been activated appear in the certificate search results in PLL. Do not confuse LAC with auth code.
- LAC letter** The License Authorization Code letter emailed by EMC to a customer after a purchase order for NetWorker software has been received. It contains a LAC, a list of the products ordered, their SKU numbers, and instructions on how to activate the software. Software download instructions are also included.
- LAC number** See “LAC.”
- license enabler** A code that is required to run a feature or product. See “enabler (or enabler code).”

license key	In Powerlink Licensing, the combination of an enabler code and an auth code for a specific product.
M	
machine ID	See “host ID.”
N	
NetWorker Management Console interface	The interface for the NetWorker server, used to configure and manage the NetWorker software.
NetWorker server	The computer that runs the NetWorker server software, which contains the base enabler and online indexes and provides backup and recovery services to the clients on the same network.
notification	A message sent to the NetWorker administrator about important NetWorker events.
P	
permanent enabler	An enabler code that has been made permanent by the application of an authorization code. See “enabler (or enabler code).” See also “authorization code.”
PLL	The Powerlink Licensing portal in Powerlink. See “Powerlink Licensing.”
Powerlink	An EMC application that is home to a range of tools designed to help customers get the most from their investments in EMC and from their storage environments in general. Software Downloads and Licensing is the Powerlink portal that provides access to EMC software and registration.
Powerlink Licensing	The portal within the Powerlink application that allows the EMC Licensing Department and customers to manage certain software product licenses. NetWorker software is one of these products.
Powerlink Support	The portal within EMC’s Powerlink application that allows, among other things, the downloading of NetWorker software for evaluation.
product activation letter	The letter emailed by EMC to a customer after the NetWorker entitlements/licenses have been activated in Powerlink Licensing. This letter includes the certificate ID, the LAC number, the host ID of your NetWorker server, a list of the NetWorker products that have been purchased and activated, and the license keys to install on the NetWorker server. Once the license keys (enablers and auth codes) have been installed, the release of NetWorker software is permanently licensed. Also called the activation letter or activation certificate.
S	
server license code	See “base enabler.”
T	
temporary enabler	A code that allows operation of the software for an additional 45 days beyond the evaluation period. See “enabler (or enabler code).”

U**update enabler**

A code that updates software from one significant release to a subsequent significant release. Update enablers are not required for maintenance releases. As with other temporary enabler codes, it expires after 45 days.